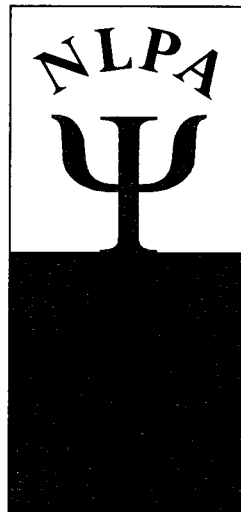


**National Latina/o Psychological Association
Asociación Nacional de Psicología Latina**

*presents
the*

NLPA Inaugural Conference



**Advancement in Latino Psychology 2004:
Strengthening Psychology through Latino Family Values**

November 18–²⁰~~21~~, 2004

*The Scottsdale Plaza Resort
Scottsdale, Arizona*

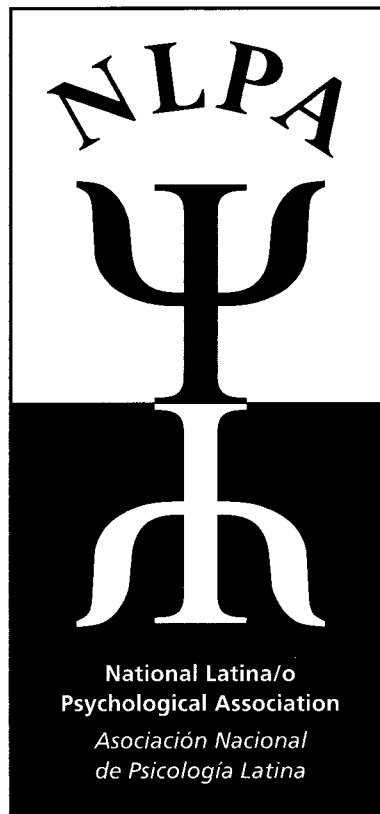
w3.arizona.edu/~nlpa
www.nlpa.ws

*Celebrating Our Past and Creating Our Future
Celebrando Nuestro Pasado y Creando Nuestro Futuro*

National Latina/o Psychological Association Conference

Table of Contents

Mission Statement	2
Welcome Message	3
Biographies: Distinguished Professionals	4-5
Biographies: Pre-Conference Presenters	6
Pre-Conference Sessions	7-9
General Conference & Poster Session	9-19
Tribute to Alfredo Castañeda & Star Vega	19
NLPA Awards & Scholarships	20
NLPA Executive Committee	21
NLPA Conference Steering Committee & Acknowledgements	22-23
Sponsors & Exhibitors	24



NLPA Mission Statement

The mission of the National Latina/o Psychological Association is to
generate and advance psychological knowledge
and foster its effective application
for the benefit of the Hispanic/Latino population.



Bienvenidos al Valle del Sol

Por parte de la junta ejecutiva de la Asociación de Psicología Latina, les doy la bienvenida al congreso inaugural—
Fortificando psicología por medio de los valores Latinos. La mayoría des ustedes son parte de los profesionales y estudiantes que le van a dar vida a la conferencia por medio de sus presentaciones. También vamos a beneficiar del apoyo de nuestras amistades profesionales.

El éxito de esta conferencia es posible porque hemos recibido el apoyo de muchos voluntarios. Le damos reconocimiento en este libro. A la vez, quiero reconocer en particular a tres personas que han hecho un trabajo fenomenal. Se llaman Veronica Bordes, Angela Zapata, Sonali Gonzalez, y el tesoro, Dr. Ed Delgado-Romero. Me dan gran orgullo.

Estamos en la tierra de 22 tribus indígenas y en lo que antes era Méjico. Ójala que tengan tiempo de disfrutar del ambiente. Espero que lo pasen super-bien aquí en el desierto. No se pierden la puesta del sol. Más que nada, compartan con sus colegas y gracias por apoyar el renacimiento de NLPA.

A handwritten signature in cursive script, reading "Patricia Arredondo".

Patricia Arredondo, President
Arizona State University

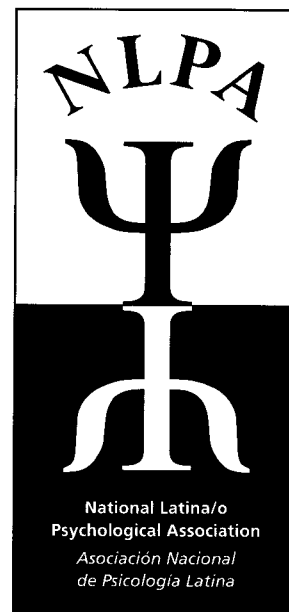
Welcome to the Valley of the Sun

On behalf of the Executive Committee of the National Latina/o Psychological Association (NLPA), I welcome you to our inaugural conference — *Strengthening Psychology through Latino Family Values.* I celebrate your participation and know that all of us will be enriched by a program with the latest research findings, clinical practices, and teaching models, all from Latino perspectives. Additional professional opportunities and resources will be brought to us by our sponsors and exhibitors.

The success of this conference is the result of volunteerism by many, many individuals. All of these invaluable individuals are identified on our acknowledgment page. However, I would like to give special recognition to the co-chairs of the volunteers—Veronica Bordes and Angela Zapata, Sonali Gonzalez, our local Public Relations Coordinator and Ed Delgado-Romero, our enormously capable treasurer. They are the best. I hope you will experience the energy of this desert land, home to 22 Native American tribes and formerly Mexico. The sunsets are vibrant so don't miss them.

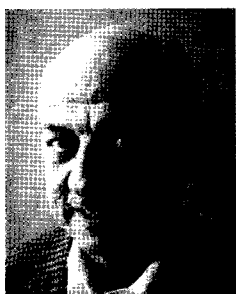
But most of all, enjoy the company of your colleagues who, like you, made the commitment to be here and to support NLPA.

We are making history together.



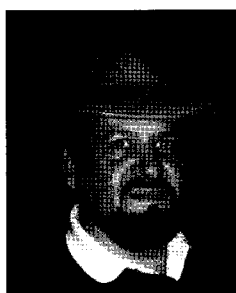
Biographies : Distinguished Professionals

J. Manuel Casas, Ph.D., received his doctorate from Stanford University with a specialization in counseling psychology.



Currently, he is a professor in the Counseling, Clinical, and School Psychology Program at the University of California, Santa Barbara. He has published extensively and serves on numerous editorial boards. He is the co-author of the *Handbook of Racial/Ethnic Minority Counseling Research* (Charles C. Thomas, 1991) and is one of the editors of both editions of the *Handbook of Multicultural Counseling* (Sage, 1995, 2001). His most recent research endeavors focus on Hispanic families and children who are at risk for experiencing educational and psychosocial problems, including drug and alcohol abuse. Specifically, his research focuses on the resiliency factors that can help Hispanic families avoid or overcome such problems. He also serves as a consultant to various private and governmental agencies and organizations.

Israel Cuéllar received his Ph.D. in Community Psychology from the University of Texas at Austin in 1977. He is currently a tenured, full professor in the Department of Psychology and the Director of the Julián Samora Research Institute at Michigan State University. He has published over 35 journal articles and chapters in the areas of acculturation, mental health, and cultural competence in health and mental health of Latinos. His current research is focused on social and community impact of immigration, migration and acculturation in Latinos. Dr. Cuéllar has received awards for “Outstanding Contribution to Science” from Texas Psychological Association; “Outstanding Faculty Award for Professional Achievement” from the University of Texas Pan American, and from various community agencies. CORP Magazine recognized him in 2003 as being among Michigan’s most influential Hispanic leaders. He is a board member of the Cristo Rey Community Center in Lansing and the Capital Area César E. Chávez Commission.



Oliva M. Espín is Professor Emerita of Women’s Studies at San Diego State University and Professor Emerita of Psychology at Alliant International University (California School of Professional Psychology-San Diego). She specializes in the psychology of Latinas, immigrant and refugee women, women’s sexuality across cultures, and qualitative research methodology. Dr. Espín has received numerous awards and is a sought after consultant on qualitative research methodology and feminist cross-cultural psychology. She is the author of many articles and has co-edited numerous books. Her latest book, *Women Crossing Boundaries: A Psychology of Immigration and Transformations of Sexuality* was published in 1999. Dr. Espín has recently turned her attention to the study of women saints from feminist and psychological perspectives.



Ena Vazquez-Nuttall, Ed.D. received her doctoral degree from Boston University. Dr. Nuttall is a professor for the School and Counseling Psychology doctoral program at Northeastern University. She started at Northeastern University in 1989 as a Professor in the Department of Counseling Psychology, Rehabilitation and Special Education and was Associate Dean and Director of Graduate School of the Bouve College of Health Sciences from 1992 to 2004. Dr. Nuttall has been a member of many state and national professional committees and boards. She has written two books with collaborators, *Assessing and Screening Preschoolers: Psychological and Educational Dimensions* (Allyn & Bacon, 1999) and *Multicultural Counseling Competencies: Individual and Organizational Development* (Sage, 1998). She contributed to the Institute of Medicine of the National Academy of Sciences (2004) report entitled *In the Nation’s Compelling Interest: Ensuring Diversity in the Health Care Workforce* (Smedley, Butler, & Bristow, 2004, Eds.). Dr. Nuttall has published widely in the areas of psychological assessment, Hispanic families and children, and cross-cultural and women’s issues.



Diane F. Halpern, Ph.D., is Professor of Psychology and Director of the Berger Institute for Work, Family, and Children at Claremont McKenna College. She has won many awards for her teaching and research. Dr. Halpern is the author of several books and has written approximately 200 journal articles and book chapters. Diane has served as president of the Western Psychological Association, the Society for the Teaching of Psychology, and the Division of General Psychology of the American Psychological Association.



Dr. Halpern developed an international perspective on contemporary issues through various positions held in Moscow, Italy, Mexico, Turkey, and Hong Kong. Dr. Halpern served for many years on the Technical Advisory Committee for the Graduate Record Exam and as a Commissioner for the Western Association of Schools and Colleges (WASC). She has served on the editorial boards of a wide range of journals. Dr. Halpern is currently serving as President of the American Psychological Association.

John Carlos Frey, Writer, Producer, Director, is a native of Mexico. "The Gatekeeper" marks John's directorial debut in film. This is also Mr. Frey's first screenplay. He has felt so strongly about the subject matter raised by the film that he financed the entire project out of his own pocket. He has directed to great success numerous live theatre presentations as well as being an accomplished actor in theatre, television, and film. Mr. Frey has received ten international awards for "The Gatekeeper." His first feature film is recognized nationally/internationally by Amnesty International, The Anti Defamation League, Human Rights Watch, National Immigration Forum, National Center for Farmworker Health, The League of United Latin American Citizens, The National Council of La Raza (NCLR), The Coalition to Abolish Slavery and Trafficking, The Joan B. Kroc Institute of Peace and Justice as well as the Hispanic Congressional Caucus in Washington, D.C.



Dr. Eugene E. García has been the Dean and Professor of Education at Arizona State University's College of Education since 2002. Before coming to ASU, he was a Professor of Education at the University of California, Berkeley. In May 2003, he was given the additional role as Vice President for University-School Partnerships.



Dr. García has published extensively in the area of language teaching and bilingual development. He served as a Senior Officer and Director of the Office of Bilingual Education and Minority Languages Affairs in the U.S. Department of Education from 1993-1995. He is presently conducting research in the areas of effective schooling for linguistically and culturally diverse student populations. His most recent books include, *Hispanic Education in the United States: Raíces y Alas*, and, *Student Cultural Diversity: Understanding and Meeting the Challenge* — both published in 2001.

Ronald F. Levant Ed.D., is Dean and Professor, Center for Psychological Studies, Nova Southeastern University. He has recently been elected President-Elect of APA for 2004. Dr. Levant has served in many positions in APA and state psychological associations, and was formerly on the faculty at Boston, Rutgers, and Harvard Universities. Dr. Levant was a clinician in solo independent practice and a clinical supervisor in hospital settings. He is the recipient of seventeen professional awards. He has authored, co-authored, edited or co-edited almost 250 publications, including 13 books, almost 130 refereed journal articles and book chapters in family and gender psychology and in advancing professional psychology, and over 100 newsletter columns. One of Dr. Levant's contributions to psychology is in pioneering the new psychology of men. He has developed theory and conducted research programs on fathering and masculinity ideology in multicultural perspective. He was also the co-founder and first President of APA Division 51 (The Society for the Psychological Study of Men and Masculinity).



Biographies : Pre-Conference Presenters



Azara L. Santiago-Rivera, Ph.D. is an Associate Professor in the Department of Educational Psychology, at the University of Wisconsin-Milwaukee, and President-Elect of NLPA. Previously, she held academic appointments in the Department of Latin American and Caribbean Studies, and the Department of Educational and Counseling Psychology, at the University at Albany, State University of New York from 1992-2004. She earned a doctoral degree in Counseling from Wayne State University, in Michigan. Dr. Santiago-Rivera has held numerous leadership positions such as the Vice-President of the Latino Interest Network of the Association of Multicultural Counseling and Development (AMCD), and the President of Counselors for Social Justice (CSJ) within the American Counseling Association.

Her publications and research interests include multicultural issues in counseling, bilingual therapy, and the impact of environmental contamination on the biopsychosocial well-being of Native Americans. She has presented on these topics at major conferences, has published numerous articles, and has coauthored two books: *The Puerto Rican Diaspora: Its History and Contributions* (2000) and *Counseling Latinos and la familia* (Sage Publications, 2002). Dr. Santiago-Rivera is currently working on a third book that focuses on teaching multicultural counseling competency.



Dr. Patricia Arredondo received an Ed.D. in Counseling Psychology from Boston University and an Ed.M. in Counseling from Boston College. She is Professor of Psychology in Education at Arizona State University. Dr. Arredondo also serves as the Program Leader for ASU's Counseling and Counseling Psychology degree program. Before coming to ASU, Dr. Arredondo was an Assistant Professor at Boston University, where she also served as Director of the Bilingual Bicultural Counselor Training Program. Dr. Arredondo was recently elected President of the American Counseling Association (ACA). Additionally, she is also the President of the National Latina/o Psychological Association. She was also recognized as a "Living Legend" by the ACA, for her contributions to the development of multicultural counseling competencies, dedication to Latina/o issues and her leadership in promoting organizational change through a focus on diversity. She has published widely on these topics. Dr. Arredondo has received numerous awards, and has held leadership positions in many national and local professional organizations. Dr. Arredondo currently serves on the Board of Directors for the People of Color Network, in Phoenix. She is also the President and Founder of Empowerment Workshops, Inc., based in Boston, MA.

Distinguished Presenter's bios



Joseph M. Cervantes, Ph.D., ABPP received his Ph.D. in community-clinical psychology from the University of Nebraska-Lincoln, in 1977. He is a Professor, Department of Counseling, California State University, Fullerton and maintains a practice in child, adolescent, and family psychology. He is licensed in the states of California and Hawaii. Dr. Cervantes' research interests are in the relatedness of cultural diversity and indigenous spirituality. He serves on the editorial board for the journal *Professional Psychology: Research and Practice*, and is a journal reviewer for *Cultural Diversity and Ethnic Minority Psychology*, and *Journal of Education and Latinos*. Dr. Cervantes also currently serves as the Ethics Chair for the Orange County Psychological Association, and is a Board Member for the Sexual Misconduct Oversight and Review Board, Diocese of Orange, Office of the Bishop.

NLPA 2004 Conference Schedule
Scottsdale Plaza Resort Hotel

“Strengthening Psychology Through Latino Family Values”

Thursday November 18, 2004

8 am – 6 pm Registration

9 am – Noon Pre-Conference Workshops (3 CEs per session)

Select only one for full 3 CEs

Dr. Andrés Barona, Arizona State University
Translations, Transiterations, and the Use of the Spanish Language in the Assessment and Delivery of Psychological Services to Latina(o) Populations in the United States.
Arizona B/O Room

Dr. Azara Santiago Rivera, University of Wisconsin-Milwaukee
The Strategic use of Language in Working with Bilingual Spanish-English Clients
Garden Terrace

Drs. Larry Dumka, Nancy Gonzales, & Anne Marie Mauricio, Arizona State University
Implementing Psychoeducational Interventions with Latino Families: Puentes a la Secundaria
Hospitality Suite Room 1

Dr. Felipe Castro & Rebeca Rios, Arizona State University
Promoting Cultural Competence in Drug Abuse Treatment with Hispanic Clients
Hospitality Suite Room 2

1:30 pm – 4:30 pm Pre-Conference Workshops (3 CEs per session)

Select only one for full 3 CEs

Dr. José Cervantes, California State, Fullerton
The Integration of Religion and Spirituality in Counseling and Psychotherapy with Chicano/Latino Families
Arizona B/O Room

Dr. G. Miguel Arciniega, Patricia Perez, & Zoila Tovar-Gamero, Arizona State University, and Dr. Maritza Gallardo-Cooper, Private Practice, Palm Beach, FL
Clinical Interventions with Latino Cross Cultural Couples
Garden Terrace

Maria Rebozo, José Urdaneta, MD, Christiano Artigas, Pastoral Counselor, Hospice of the Valley
The Concept of Hospice and Working with Latino Families through Pastoral Care around Issues of Death and Dying
Hospitality Suite Room 1

Gustavo McGrew and Larry Villano, TERROS, Sally Stamp and Patricia Arredondo, Arizona State University
Learning from an Organizational Multicultural Audit
Hospitality Suite Room 2

5 pm – 7 pm Welcoming Reception/Una Bienvenida con Mariachi Pasión

Lobby Bar

Preconference Presentation Summaries

Clinical Interventions with Latino Cross Cultural Couples

The highest intermarriage rate in the United States is found among the Latino population but there is a void of counseling knowledge, empirical data, and tools available for professionals working with Latino mono-ethnic and inter-ethnic couples. The presentation will delineate the characteristics of these unions, identify influencing variables that modulate adjustment and conflict, and provide best practices in assessment methods and effective counseling approaches.

The Concept of Hospice and Working with Latino Families through Pastoral Care and Issues of Death and Dying

The logistical aspects of hospice as it exists in the United States are largely governed by Medicare and other health insurances. Hospice of the Valley is an organization that provides just such care here in the Phoenix area for over 1500 patients a day, regardless of their ability to pay. The hospice care concept not only includes the patient, but it also goes beyond, by assisting those left behind, and helping them to work through the bereavement process. Panelists will discuss more of the specifics of hospice care in general and more specifics about Hospice of the Valley, the organization.

Implementing Psychoeducational Interventions with Latino Familias: Puentes a la Secundaria: A Preventive Intervention for Mexican American Adolescents

Participants will learn about critical components of implementing psychoeducational interventions for Latino families with school age children. The workshop will address how to join with the sponsoring system so the intervention can accomplish its goals, how to effectively recruit and retain the intended sample, and how to use change strategies that increase involvement. Participants will also have an opportunity to discuss the role of culture in planning interventions for Latino families and to apply the ideas to their own settings.

Promoting Cultural Competence in Drug Abuse Treatment with Hispanic Clients.

This hands-on workshop will address:

- 1) Typical challenges in drug abuse treatment including: referral and client motivation, preparation for treatment, treatment trajectories, relapse prevention, treatment retention; and
- 2) Special challenges in treatment with Hispanic drug dependent clients using: culturally-relevant assessment, intervention strategies, and relapse prevention and treatment retention

The Strategic use of Language in Working with Bilingual Spanish-English Clients.

The clinical and counseling profession has witnessed a steady increase in the development and use of Latino-centered therapeutic approaches; however, little attention has been given to the role of language in treatment. The importance of language representation and expression of emotions when working with bilingual Spanish-English bilinguals will be discussed. Results of a qualitative study, as well as strategies to effectively work with bilingual clients will be presented.

Translations, Transliterations and the Use of the Spanish Language in the Assessment and Delivery of Psychological Services to Latina(o) Populations in the United States.

This workshop is designed to assist both novice and intermediate psychological service providers in understanding the multitude of issues involved when using Spanish during the assessment and/or treatment of Latino clients. Psychometric issues as well as problems with translations of existing U.S. normed instrument will be discussed. In addition, the importance of communication as well as language and cultural nuances will be presented.

The Integration of Religion and Spirituality in Counseling and Psychotherapy with Chicano/Latino Families

This presentation will provide an overview for an understanding of the role that religion and spirituality play in the psychological complaints often voiced by Chicano/Latino families. Religion and spirituality have always been a salient dimension in the socialization of Latino families. However, this discussion is frequently ignored in professional practice due to multiple reasons among which include lack of understanding and competence with religious issues, difficulty integrating how psychological problems can mask religious and spiritual issues, and lack of professional guidance in addressing themes related to God or even indigenous spirituality. This presentation will provide an experiential exercise, a discussion of some cases, and an overview for how to develop the necessary competence and comfort with addressing these issues with many Chicano/Latino families. Implications for counselors in managing religious and spiritual issues will be provided.

Learning from Organizational Multicultural Audit

Health and Mental healthcare organizations are being challenged to become more culturally responsive. This presentation will delineate a case study where a multicultural assessment took place. Findings will be shared.

Friday	November 19, 2004	8 CE
8 am – 6 pm	Registration	Exhibits
7 am – 7:45 am	Continental Breakfast and música	
7:45 am – 9:00 am	Opening Session ~ La Bienvenida by President Patricia Arredondo	
	Ceremonia Indígena: Dr. José Cervantes	
	Introduction of Dignitaries: APA President Diane Halpern, APA Executive Director of the Public Interest Directorate, Dr. Henry Tomes, Dr. Barry Anton, APA Board of Directors, Bertha Holliday, APA Director of the Office of Ethnic Minority Affairs, and Scottsdale Mayor.	
	Opening Comments by Dr. Patricia Arredondo	
	“Strengthening Psychology through Latino Family Values”	
	Grande Ballroom C & D	
9:15 am – Noon	Concurrent Paper Sessions	
9:15 am – 10:30 am	Symposia (2) and Paper Sessions (2)	

Symposia 1

Grande Ballroom A

Henry Acosta & Maria José Carrasco, New Jersey Mental Health Institute, Inc.

The NAMI Family-to-Family Education Program: Building an Evidence-based National Peer Program for Families with Serious Mental Illness

Symposia 2

Grande Ballroom B

Joan Biever, John Gomez, Cynthia Gonzalez & Nina Patrizio-Quiñones, Our Lady of the Lake University

Psychological Services to Spanish-Speaking Populations

Training Competent Professionals

Paper Session 1

Grande Ballroom E

- 1A. Edward Delgado-Romero, Carolyn Tucker, Keith Herman, Rhonda Hackshaw, Miriam Pacheco & Ocie Harris, Indiana University, Bloomington
Providing Patient-Centered Culturally Sensitive Healthcare to Latinas/os : Roles for Psychologists
- 1B. Eduvigis Cruz-Arrieta, NYU Medical Center/Hassenfeld Center Psychological Practice in Pediatric Hematology/Oncology
Helping the Latino Family Cope
- 1C. Monica Ulibarri, Carol Sipan, Fernando Sanudo & Melbourne Hovell, Center for Behavioral Epidemiology and Community Health, San Diego State University
Conducting Culturally Sensitive Scientific Research with Migrant Farm Workers: Tales from an HIV Risk Assessment Study of Mixtec Migrants Working in San Diego County

Paper Session 2

Grande Ballroom F

- 2A. Lisa Flores, Roger Worthington, Kathleen Boggs, Maria Elena Benavides, Dalila Garcia, Jessica Hernandez & Raul Mendoza, University of Missouri, Columbia
Latino Psychology Research: A Trend Analysis
- 2B. Elizabeth Fraga, Teachers College
Client-Counselor Ethnic Similarity, Client-Counselor Latino Cultural Value Similarity, and Counseling Process and Outcome Variables
- 2C. Paul Priester, University of Wisconsin, Milwaukee
The Use of Spanish Language Role Induction

9:30 am – 10:30 am Hospitality Suite Room 1:– Student Mentoring Session

Chairs – Dr. Marie Miville & Dr. Jeanette Castellanos

9:30 am – 11:30 am Hospitality Suite Room 2:– State Chapter Meeting

Chairs – Dr. Milton Fuentes & Dr. Miguel Gallardo

10:45 am – Noon Symposia 2 and Paper Session 2

10:45 am – Noon Hospitality Suite Room 1 – Neuropsychological Assessment of the Hispanic Client

Dr. Rosalia Pereyra-Quiroz & Dr. Marc Walter

Paper Session 3 (*This paper session is presented entirely in Spanish*)

Grande Ballroom A

- 3A. Ana Rita Almeida Melikian
Psicoterapias para el afrontamiento del dolor crónico
- 3B. Teresa Robles, Centro Ericksoniano de México AC
La psicoterapia ericksoniana, una herramienta útil para trabajar con Latinos inmigrados a los Estados Unidos

Paper Session 4

Grande Ballroom B

- 4A. Aaron D. Ahern, Melanie Domenech Rodriguez & Mark Innocenti, Utah State University
Acculturation versus Cultural Identification: A Study Comparing Constructs and Measurements
- 4B. Lucas Torres, University of Notre Dame
Depression Among Latinos: The Role of Acculturation, Coping, and Intercultural Competence
- 4C. Marie C. Weil, Nuestra Clinica Behavioral Health Services
Latino Ethnic Identity and Acculturation: Practical Applications in a Latino Community Mental Health Outpatient Treatment Center with a Focus on Client-Therapist Language Match

Symposia 3

Grande Ballroom E

Patricia Arredondo, David Acevedo & Rebecca Martinez, Arizona State University & University of Kentucky
Approaches to Graduate-Level Training in Latina/Latino Psychology

Symposia 4

Grande Ballroom F

Anai Cuadra, Dean Coffey & Bradley Hudson, Childrens Hospital, Los Angeles
Issues in Mentoring and Supervising Spanish-speaking Psychology Fellows and Interns

Noon – 1:30 pm

Lunch – La Terraza

Keynote presentation by John Carlos Frey, Director and lead actor of the film *The Gatekeeper*

1:45 pm – 3:00 pm

Symposia (4)

Symposia 5

Grande Ballroom A

Lydia Buki & Tiffany Schiffner, University of Illinois, Urbana-Champaign
Health Psychology: Unloading the Disproportionate Burden Carried by Latina Women

Symposia 6

Grande Ballroom B

Glenn S. Brassington, Sonoma State University
Ethnicity and Health Promoting Behavior in the Management of Stress, Sleep Problems, and Obesity.

Symposia 7

Grande Ballroom E

Margarita Leonor Diaz, Magdalena Perez & Marla Craig, University of Texas at Austin
The Curses and Blessings of Navigating Between Cultures: A Group Therapy Approach for Working with Latinos and Other Minorities

Symposia 8

Grande Ballroom F

René Diaz-Lefebvre, Glendale Community College
¿Somos Inteligentes: Multiple Intelligences, Creativity and Assessment for Understanding

1:45 pm – 2:45 pm

Hospitality Suite, Room 1 – GLBT Meeting

Chair – Dr. Carlos Hernandez

1:45 pm – 2:45 pm

Hospitality Suite, Room 2- National Science Foundation

Dr. George Chu, Program Director for Geographic and Regional Sciences

3:15 pm – 4:30 pm

Symposia 3 and Paper Session 1

Symposia 9

Grande Ballroom A

Milton A. Fuentes, Elisa Velasquez-Andrade & Alex Renelt, Montclair State University
Addressing Treatment and Research Training in Latino Psychology: An Interactive Syllabus Exchange Symposium

Symposia 10

Grande Ballroom B

Irene Lopez, Edil Torres-Rivera, Mariolga Reyes-Cruz & Melanie Domenech-Rodriguez, Kent State University
Writings From a Crooked House: Deconstructing Puerto Rican Racial and Ethnic Identity

Symposia 11

Grande Ballroom E

Carlos Pozzi, Andrea Pauley, Alicia La Hoz & Susana Zavaleta, Wheaton College
Parenting Training with Latino Parents

*Remington's
Restaurant
Board Room Executive*

Paper Session 5

Grande Ballroom F

- 5A. Rachel Navarro, Lisa Flores, Ginger Lynn & Yi-Jiun Lin, University of Missouri
Validating Acculturation and Ethnic Identity Scales with Mexican American Adolescents
- 5B. Shelby Ortega, Clark University
Exploring Latino Identity: Racial and Ethnic Identity, Acculturation, and Self-Esteem
- 5C. Yuka Mizutani, Sophia University, Japan
"La Identidad Latina": Does it Apply to Native Americans with Latin American roots?

4:45 pm – 6:00 pm

Distinguished Latina/o Professionals featuring:

Drs. J. Manuel Casas, Israel Cuellar, Oliva Espin, & Ena Vazquez Nutall
Chair – Dr. Patricia Arredondo
Grande Ballroom C & D

6:00 pm – 7:15 pm

Poster Session 1

Grande Ballroom E & F

6:00 pm – 7:15 pm

Pool-side Reception, Style Show, Book Signing, and Silent Auction

Nick Barnecko, New Mexico State University
El Laberinto Latino: Narratives of Success for First Generation Mexican American College Students

Alinne Z. Barrera & W. Edward Craighead, University of Colorado, Boulder
Cultural Factors Associated with Major Depressive Disorder Among Adolescent Latinas

Donna Castañeda, San Diego State University-Imperial Valley Campus
Sexual Satisfaction among Latinas/os in Close Relationships: An Exploratory Study

Andrés Consoli, Gabriela Nielsen & Saul Hidalgo, San Francisco State University
Accessing Care for Depression: Mexican/Mexican-American Patients' Perspectives

James Cordova & Shelby Ortega, Clark University
Speaking for Themselves: Latinas' Experience of Interpersonal Violence

Andrea Dixon Rayle, Toni Brucato, Jennifer Sand & Jessica Ortega, Arizona State University
The Comadre Group: A Support Group Model for Monolingual Immigrant Latinas

Carina Esteban
Mi Cuerpo: A Look at Latinas and Body Image.

John Gomez, Joan Bieber, Cynthia Gonzalez & Nina Patrizio-Quiñones, Department of Psychology, Our Lady of the Lake University
Are You Competent?: Measuring the Dimensions of "Multicultural Competence"

Rufus Gonzales, Kim Bena, Laura Dick, Camila Caceres, Wendy Conner & Elizabeth Vera, Loyola University, Chicago
Components of Subjective Well-Being: The Influence of Positive and Negative Affect on Perceptions of the Self, Family, Peers and School Environment in a Primarily Latino, Urban Adolescent Population.

Jane Dulce, Marcel de Dios & Lourdes Suarez-Morales, University of Miami
Reliability and Validity of the Societal, Attitudinal, Familial, and Environmental, Acculturative Stress Scale for Children

Nicole Lutes-Fuentes, Patricia Perez, Melissa Morgan, Madeleine Shalowitz, Kim Wagenaar & Alisu Schoua-Glusberg, Evanston Northwestern Healthcare
Ethnic Health Disparities: Facilitating Qualitative Research through an Academic-Community Partnership.

Lynne Matte, Teresa Giral & George Bonanno, Teachers College, Columbia University
Attachment, Social Support, and Marriage: Different Paths to Mental Health in Latinos and Anglos

Angelica Monteverde, Cindy Fernandez & Milton Fuentes, Montclair State University
Teachers' Perceptions of Mentoring at an Urban High School Academy: The Results of a Needs Assessment

Jasmine A. Mena, University of Rhode Island
Latino High School Students and the Intent to Graduate

Sara J. Rangel-Sanchez, Washington State University, Roberto J. Velasquez, San Diego State University
MMPI-2 Profiles of a Sample of Latino/a Psychiatric Outpatients

Cidhinnia M. Torres Campos
Establishing a Model of Latino Academic Success

Dawn M. Salgado & Jasmine A. Mena, University of Rhode Island
The Focus and Integration of Community in the Cuban Health Care System

Kee Straits, Utah State University
Bilingual Education and Culture in an Andean Indigenous Community

Alicia Soliz, Bryan S. Kim, Mabel Gonzalez, & Blanca Orellano, UC Santa Barbara
The Development of Latino/a Value Scales: Preliminary Findings

Ana Julia Bridges, Heather Frank, & Maria Garrido, University of Rhode Island
Assessing Latino Student's Sense of School Membership and Ethnic Identity

Carla C. Mayorga & Michael S. Robbins, University of Miami
Group Therapy for Latino Inmates: Evidence for a Twelfth Curative Factor

Lisa A. P. Sanchez-Johnson, Pedro Haro-Aruizu, & Adela Mearig, University of Hawaii-Manoa, Elsonne Bayley, Argosy, University, Israel Cuellar, Michigan State University
Latino-Centered Health Psychology Assessment

Laura R. Buenrostro, Rosalind Franklin University of Medicine and Science, Lisa A.P. Sanchez-Johnson & John, Burns, University of Hawaii-Manoa
Acculturation and Socioeconomic Status in Latino Obesity

7:30 pm

Film showing: The Gatekeeper

John Carlos Frey, Director, El Teatro

~~_____~~
Rodríguez
~~_____~~
Vergara
Pacheco
~~_____~~
Baldwin
~~_____~~
Mendoza

Saturday **November 20, 2004** 8 CE

8 am – 1 pm **Registration**

7 am – 8:00 am **Continental Breakfast y música**

8:00 am – 9:00 am **Opening Session**

Address by Dr. Gene Garcia, Dean, College of Education and Vice-President of University K-12 Initiatives, Arizona State University

Grande Ballroom C & D

Special guests: Arizona Hispanic Caucus

9:15 am – Noon **Concurrent Sessions**

9:15 am – 10:30 am **Symposia (2) and Paper sessions (2)**

Paper Session 6

Grande Ballroom A

6A. Lisa Edwards & Lideth Ortega-Villalobos, University of Notre Dame

La Influencia de Mi Familia: A Qualitative Exploration of How Families Help Latino College Students Navigate Cultural Contexts

6B. Denise E. Francis Montano, Carla J. Reyes, Susan L. Morrow & Octavio Villalpando, University of Utah

Re/Visioning Successes: Characteristics of Mexican American Men Who Achieve a Graduate-Level Education

6C. Carlos Zalaquett, University of South Florida

Characteristics of Successful Latino Students

Paper session 7

Grande Ballroom B

7A. Josefina Contreras, Madinah Ikhlas & Justin Quattelbaum, Kent State University

The Adjustment of Children of Latina Adolescent Mothers: Associations with Maternal and Family Characteristics.

7B. Melissa Davis & Melanie Domenech-Rodriguez, Utah State University

An Examination of Self- Reported Parenting Practices Among First Generation Spanish-Speaking Latino Families

7C. Jesus Rodriguez & Melanie Domenech-Rodriguez, Utah State University

Parental Acculturation and Child Behavior Problems

Symposia 12

Grande Ballroom E

Ricardo Carillo ,Director of Clinical Services Kaweah Delta Mental Health Hospital & Director of Latino Mental Health Kaweah, Delta Health Care District, and Richard Cervantes, Behavioral Assessments, Inc.

Promotoras en Latino Behavior Health: Successful Engagement Strategies

Symposia 13

Grande Ballroom F

Jorge Ramirez, Manuel Ramirez III, Magdalena Perez, Harmon Hosch, Steven Lopez, Douglas Steinley & Gladys Valdez, University of Illinois, Urbana Champaign, University of Texas at Austin, and UC Los Angeles
Intergenerational Family Research in the United States-Mexico Border Community

9:45 am – 10:45 am **Hospitality Suite – Room 1 - Minority Fellowship Program Application Preparation Chairs – Dr. James Jones & Dr. Kim Nickerson,**

American Psychological Association

Cancelled

9:45 am – 10:45 am **Hospitality Suite -Room 2 – Multiracial Latinos: Research Issues & Future Directions**

Chair – Dr. Lisa Edwards

Hospitality Suite

*

10:45 am – Noon **Ballroom C – Film: “Culture of Emotions”
A Cultural Competence and Diversity Video Training Program**

Harriet Koskoff, Producer

10:45 am – Noon **Symposia (2) and Paper sessions (2)**

Symposia 14
Grande Ballroom A

*VER TO -
Ballroom A*

Suite 5006
~~9005~~

check registration

Norma Rodriguez, Pitzer College

Development and Validation of the Multidimensional Acculturative Stress Inventory (MASI)

Symposia 15
Grande Ballroom B

Claudia Rueda-Alvarez, Northeastern Illinois University

Parenting Against the Odds: Latina Single Mothers' Perceptions of Effective Practices in Raising Academic Achievers

Paper Session 8
Grande Ballroom E

8A. Raul Calderon, Jr. & Marilyn Winkleby, University of Kentucky & Arizona State University

Not All Stress is Created Equally: Differences in Heavy Substance Use Between and Within Ethnic Groups by Level of Stress

8B. Lorna Myers & Mark Beitel, Bilingual Neuropsychology Center

Psychological Testing of Hispanic Americans

8C. Adriana Pellicari-Rodriguez, Private Practice – Brookline, MA

Assessment Considerations within a Bilingual and Sociocultural Context

Paper Session 9
Grande Ballroom F

9A. Rebecca Martinez, Bryn Harris, Lindsey Bollinger & Edward Delgado-Romero, Indiana University, Bloomington

The Relationship of Acculturation to Depression and Self Concept among Urban Adolescent Latina(o)s

9B. Tatiana Pinedo & Esteban Cardemil, Clark University

Latino Families: Effects of Acculturation on Relationship and Functioning

11 am – Noon **Hospitality Suite, Room 1 – Publishing Your Research**

Chair – Dr. Eleanor Gil-Kashiwabara

Hospitality Suite, Room 2 – Legislative Involvement

Chair – Dr. Annie Toro

Noon – 1:00 pm **Lunch – Remarks by Dr. Ronald Levant, President-Elect,**

American Psychological Association

Lunch in Ballroom

Psychological Approaches to the Management of the Health and Disease: Health Care for the Whole Person

Roundtable Discussions: La Terraza

1:15 pm – 2:15 pm Open Membership Meeting

Grande Ballroom C & D

2:30 pm – 3:45 pm Symposia 3 and Paper Session 1

Symposia 16

Grande Ballroom A

Araceli Salazar, Childrens Hospital, Los Angeles

Parent-Child Interaction Therapy (PCIT) in Spanish: Application of an Empirically Supported Treatment to High-risk Families

Symposia 17

Grande Ballroom B

Carina Sudarsky-Gleiser, The College of William & Mary

We too are Vulnerable to Developing Eating Disorders: Is the Euro-Centric Bias of our Profession Interfering with the Identification and Treatment of Latinas?

Symposia 18

Grande Ballroom E

Carmen Vazquez, Institute for Multicultural Behavioral Health

Parenting with Pride Latino Style: How to Help your Child Cherish your Values and Succeed in Today's World

Paper Session 10

Grande Ballroom F

10A. Eleanor Gil-Kashiwabara, Oregon Health & Science University-Center on Self-Determination

Understanding the Transition from Adolescence to Adulthood for Latinas with Disabilities: An Examination of Barriers and Strategies for Success

10B. Erendira Lopez-Garcia, Wright State University

A Preventive Treatment Program for Spanish-Speaking Male Batterers

10C. Elisa Velasquez-Andrade, Shannon Grady, Mac Wooley, Sara Gurtler, Kristin Wards, Robert A. Hicks & Glenn Brassington, Sonoma State University

Ethnic Differences in Adult Close Attachment Relationships

2:30 pm – 3:30 pm Hospitality Suite, Room 1 – Student Mentoring Session

Chairs – Dr. Marie Miville & Dr. Jeanette Castellanos

2:30 pm – 4:30 pm Careers in Academia Panel featuring Drs. Delia Saenz, Andrea Romero, and Brian McNeill,

Chair – Merry Bullock, American Psychological Association

Hospitality Suite, Room 2

2:30 pm – 4:30 pm Special Presentation in Spanish

Fire and Firewater: Clinical Approaches for Substance Abuse and Domestic Violence

Ricardo Carillo, Director of Clinical Services Kaweah Delta Mental Health Hospital & Director of Latino Mental Health Kaweah Delta Health Care District, and Richard Cervantes, Behavioral Assessments, Inc.

Grande Ballroom C & D

4:00 pm – 5:15 pm Symposia 1 and Paper Sessions 3

Symposia 19

Grande Ballroom A

David Kannerstein and Winnie Lanoix
Right Management Consultants

Coaching Latino-Americans to Navigate Organizational Culture: Demonstrating the Link between Acculturation and Organizational Consulting

Paper Session 11

Grande Ballroom B

11A. Luis Rivas, VA Medical Center, San Juan

The Narratives of the Bilingual Therapist: From English to Spanish and All Points in Between

11B. Melissa L. Morgan & Rufus R. Gonzales, Loyola University Chicago

Strength in the Face of Adversity: Narratives of Cuban Resilience

11C. Fred Milan, SUNY College at Old Westbury

Exploring Multiple Group Membership in Culturally Competent Psychotherapy and Supervision

Paper Session 12

Grande Ballroom E

12A. Edil Torres-Rivera & Loan Phan, University at Buffalo, SUNY

Another Look at Pico's "El Día Menos Pensado": An Overview of Puerto Rican Inmate Issues

12B. Tod Sloan, Lewis and Clark College, Graduate School of Education

The Legacy of Ignacio Martín-Baró: Liberation Psychology versus Imperialist Psychology

12C. Daniel Sciarra, Hofstra University

Structural Family Therapy with Latinos: How Culturally Sensitive Can it Be?

Paper Session 13

Grande Ballroom F

13A. Elizabeth Vera, Rufus Gonzales, Melissa Morgan, Charu Thakral, Wendy Conner, Erin Caskey & Amber Bauer, Loyola University, Chicago

Subjective Well Being and Urban Latino Adolescents

13B. Bernadette Sanchez, Yari Colon & Patricia Esparza, DePaul University

The Role of Sense of School Belonging and Gender in the Academic Outcomes of Urban Adolescents of Color

13C. Marisol Solarte-Erlacher & Elisabeth Suarez, Denver Seminary

The Effects of Acculturation Level and Ethnic Identity Level on Ego Identity Development in Second-generation Mexican American Adolescents

3:45 pm – 4:45 pm

Hospitality Suite – Getting in to Graduate School

Chair Dr. Emilio Ulloa, San Diego State University

5:30 pm – 6:30 pm **Poster Session 2**
Grande Ballroom E & F

- Jessica Ortega, Patricia Arredondo, Sharon Kurpius & Nancy Gonzales, Arizona State University**
Academic Persistence of Latinas in Higher Education: The Supportive Role of the Mother Daughter Relationship
- Becky Pérez, Jorge Ramirez, & Brenda Hernandez, University of Illinois, Urbana Champaign**
Mexican Americans and Coping: Caregiving of a Mentally-Ill Relative
- Patricia Perez and Veronica Rodriguez, Arizona State University**
Common Themes and Unique Experiences: Latinas and Latinos in the United States Share Their Perceptions
- Geneva Reynaga Abiko, Department of Mental Health, Correctional Medical Health, Vacaville, CA**
Personality Assessment with Latinos
- Jessica Rios, University of Miami**
Understanding the Specifics of Family Acculturation Processes and How This Plays a Role in Hispanic Youth Behavior Problem
- Veronica Rodriguez & Marie-Christine Rutter, Arizona State University**
Ethnic Pride and Language use for Latina/o Youth
- Merranda Romero-Marin, New Mexico State University**
Growing Older Gracefully: Resilience and Life Satisfaction Among Mexican-American Elders
- Erica Y. Chu, Mary Lee Nelson, & Makeda L. Newell, University of Wisconsin, Madison**
Mexican American Adolescents' Psychological Experience of Ethnicity
- Kathryn Torres, Laura Kohn-Wood & Magdalena Perez, University of Michigan**
The Relationship between Acculturation and Coping Mechanisms in Mexican American Students
- Nathalie Vallieres, Roseanne Illes, Isabel Martinez & Renata Gutierrez, Teachers College, Columbia University**
"En Vision: A look at Teachers College", a recruitment effort for Latino/a students
- Mariana Valenzuela, Genevieve Ferrel, Claudia Ayon, Lorena Saucedo, Dalia Varela, & Donna Castaneda, San Diego State University**
Perceptions of Women Who Leave versus Women Who Stay in Abusive Relationships
- Ellen Vaughan, Michael Zinser, & Marcel de Dios, University of Miami**
The Role of Family Support and Influence on Tobacco Smoking Behavior in Hispanics: Differences and Similarities by Level of Acculturation.
- Deborah Vergara, University of Florida**
Culture, Attachment, and Adjustment: A Comparison of Latino and Caucasian College Students
- Martin Lara, Pit Kolodinsky, & Juan Espitia, Northern Arizona University**
Occupational Self-Efficacy, Career Interests, and Traditionality of Latina Female Adolescents Attending Career Fairs
- Omar G. Guidino & Anna S. Lau, UC Los Angeles**
Parental Cultural Orientation and the Context-Dependence and Emotional Correlates of Shyness in Latino/a Children
- Hector Y. Adames, Andrea Cantarelli-Toppe, & Erendira Lopez-Garcia, Wright State University**
The Unmasking Machismo: An Intervention Strategy for Latino Male Batters
- Jose A. Salceda & Roberto Velasquez, Washington State University**
MMPI-2 Characteristics of Latino Psychiatric Outpatients: Two Independent Samples
- Nallely Galvan, University of Illinois at Urbana-Champaign**
Male Partner Influence on Latina's Cancer Screening Practices
- Noelle Savatta, University of Georgia**
Negotiating Latino Identity: The Garifuna of Honduras
- Alejandro Morales, University of Nebraska-Lincoln**
- Marianela I. Parraga, Loyola University of Chicago**
Psychology and the Mental Health Care System in Cuba

7 pm – 9 pm **Dinner and NLPA Annual Awards**

Ballet Folklórico Alegria

9 pm – 1 am **La Pachanga with the band La Familia**

Grande Ballroom C & D ~ Dance tickets available at the door \$25

In Recognition of Two Trail-Blazers

We realize that many students and young professionals may not know of Latina/o psychologists who opened doors for all us and also left us their legacy. At this conference, we want to recognize Dr. Alfredo Castañeda and Dr. Star Vega, both exemplary figures in psychology.

Alfredo Castañeda

Alfredo Castañeda passed away from two back-to-back heart attacks in early January of 1981. He was born in San Francisco in the Mission District. Both his parents were immigrants from the state of Jalisco. He served in the armed forces during the Korean War, and with assistance from the GI Bill he obtained his BA in Psychology from San Francisco State in the early 50s. His graduate work was at Ohio State University in Clinical Psychology under Julian Rotter. Dr. Castañeda was the first Chicano to obtain a Ph.D. in Psychology, and the first Chicano to become a full professor (at age 37, if I am not mistaken). During his career, he taught at the University of Iowa, City University of New York and Hunter College, University of Texas, UC Riverside, and Stanford University.

Dr. Castañeda was a prolific professional. Some of the highlights of his contributions are as follows: developed the first anxiety scale for children entitled the Child Manifest Anxiety Scale (it was translated into several languages and used in various countries), he designed equipment for doing research with children on verbal learning (the Hunter Card Master), and the first clinical psychologist to be named to the editorial board of the Journal of Experimental Psychology, the prestige research journal for APA at that time. (prepared by Dr. Manuel Ramirez III).

Star Vega

Dr Star Vega, practitioner, professor of psychology, and advocate for all psychologists, died Saturday April 24, 2004. She was 55. After many months of attempting to find a donor, Star had a successful bone marrow transplant and shortly thereafter died of an acute infection. At the time of her death, Star was on the faculty of the doctoral program in Clinical Psychology at Phillips Graduate Institute.

Star was the fifth bilingual/bicultural person to receive a Ph.D. in Clinical Psychology from the University of Southern California. From her time as a graduate student, she made significant contributions that would continue throughout her career as a mother, friend, mentor and psychologist, all in this order. Upon graduation, Star entered into private practice and developed specialties in forensics, neuropsychology, child psychology, multiculturalism, pharmacology, and industrial medicine. Ultimately, her desire to give back to students and the community led her back to academia, retiring from a thriving private practice, to join the Phillips Graduate Institute. She earned the respect of her colleagues, both within the Latino and mainstream communities. She eventually became the first Latina to serve as President of the California Psychological Association in 2002.

Her dedication and genuine love, acceptance of all people, and care for so many of us will be missed the most. She was an inspiration and a genuine Star who has left many of us enlightened and ready to continue her legacy. A dicho comes to mind, "El que adelante no mire, atras se queda." This was Star. Her presence is already noted in my life. (prepared by Dr. Miguel Gallardo).

National Latina/o Psychological Association ~ 2004 Awards

To be announced at the conference

The NLPA Mission includes:

- Generating and advancing psychological knowledge.
- Fostering the effective application of psychological knowledge for the benefit of the Hispanic/Latino population.
- Valuably contributing to the field of Latina/o psychology.
- Promoting the educational and professional advancement of Latina/o psychologists.
- Fostering communication with members of Latina/o communities at all levels for their mutual education.
- Promoting an awareness and understanding of issues that Latina/o psychologists and mental health professionals might have as related to their educational and professional experiences.

Distinguished Professional Career Award: Conferred on psychologists whose contributions have advanced an agenda congruent with NLPA's mission.

Distinguished Professional Early Career Award: Conferred on psychologists whose contributions have advanced an agenda congruent with NLPA's mission. Early career is 10 years or less since earning a doctoral degree.

Star Vega Distinguished Service Award: Conferred on psychologists who have distinguished themselves by their service to the Latino/a community. The award is named in honor and memory of Dr. Star Vega for this conferment. Dr. Star Vega, Practitioner, Professor of Psychology, and advocate for all psychologists, died Saturday April 24, 2004 at the young age of 55 due to leukemia. Dr. Vega was core faculty in the doctoral program in Clinical Psychology at Phillips Graduate Institute. She was also the 2002 President of the California Psychological Association, the first Latina to occupy this position.

Cynthia de las Fuentes Dissertation Award: Criteria for the award include: focusing on issues related to Latino/a Psychology theory, research, or practice and contributing in a substantive way to the advancement of knowledge related to Latino/a Psychology. This Dissertation Award includes \$500 through a generous donation by Dra. Cynthia de las Fuentes.

Student Scholarship Awardees:

Based on program proposals for the conference

D. Aaron Ahern
Melissa Davis
Rufus Gonzalez

Denise Montano
Melissa Morgan
Yuka Mizutani

Becky Perez
Monica Ulibarri
Deborah Vergara

Presidential Citations:

Dr. Andrés Console
Dr. Edward Delgado-Romero
Dr. Andrea Romero
Dr. Lisa Sanchez Johnsen

Veronica Bordes
Nallely Galvan
Angela Zapata
Michele Orduna

C. Sonali Gonzalez

NLPA Executive Committee

Patricia Arredondo, Ed.D., President
Arizona State University

Andrés Consoli, Ph.D., Electronic Communications Manager
San Francisco State University

Azara Santiago-Rivera, Ph.D., President-Elect
University of Wisconsin-Milwaukee

Andrea Romero, Ph.D., Web site Coordinator
University of Arizona

Andrés Barona, Ph.D., Past-President
Arizona State University

Michele Orduna, Assistant to the Website Coordinator
University of Arizona

Ed Delgado-Romero, Ph.D., Treasurer
Indiana University

C. Sonali Gonzalez, Public Relations
Northern Arizona University

Nallely Galván, M.S., Assistant to the Treasurer
Indiana University

Jari Santana-Wynn, Ph.D., Membership
Miami University (Ohio)

Bryn Harris, Assistant to the Treasurer
Indiana University

Jeanett Castellanos, Ph.D., Student/Professional Development
University of California-Irvine

Alberta Gloria, Ph.D., Secretary
University of Wisconsin-Madison

Marie Miville, Ph.D., Student/Professional Development
Teachers College, Columbia University

Alberto Figueroa, MBA, Liaison to APA
American Psychological Association

Veronica Leal Muniz, Student/Professional Development
Ohio State University

Lisa Sanchez-Johnsen, Ph.D., Newsletter Editor
University of Hawaii-Manoa

Cynthia de las Fuentes, Ph.D., Historian
Our Lady of the Lake University

Rebecca Martinez, Ph.D., Newsletter Editor Elect
Indiana University

Carlos Zalaquett, Ph.D., E-journal Editor
University of South Florida

Acknowledgements

NLPA Local Planning Committee

Patricia Arredondo, ASU
Veronica Bordes, ASU
Felipe Castro, ASU
Jess Flores, Univision
Evie Garcia, NAU
Sonali Gonzalez, NAU
Gustavo E. McGrew, TERROS
Andrea Romero, Uof AZ
Shelly Ruelas, ASU
Maryann Santos De Barona, ASU
Angela Zapata, ASU

*With special gracias for making
NLPA 2004 a great success...*

Program Review Committee

Alejandro Morales
Andres Barona
Andres Consoli
Bernadette Sanchez
Carlos Zalaquett
Catalina D'Archiardi
Danielle Kaplan;
Donna Castaneda
Edil Torres Rivera
Elizabeth Reyes
Fred Millan
Irene Lopez
Linda Castillo
Lisa Edwards
Lisa Sanchez-Johnsen
Lizette Ojeda
Melanie Domenech-Rodriguez
Miguel Gallardo
Milton A. Fuentes
Natalie Bellman
Rebecca S. Martinez
Rosa Moreno-Alcaraz
Rufus Gonzales
Sandra Palacio
Veronica Muniz
Yvette Tazeau

Program Selection Committee

Co-Chairs
Ed Delgado-Romero, Ph.D. and
Lisa Flores, Ph.D.

Poster Awards

Co-Chairs
Jeanett Castellanos, Ph.D. and
Marie Miville, Ph.D.

Awards Committee

Chair, Andrés Consoli, Ph.D.
Ignacio David Acevedo-Polakovich,
Doctoral Student
Esteban V. Cardemil, Ph.D.
Yvette Tazeau, PhD.

Student Scholarship Committee

Chair, Shelley Ruelas, Ph.D. and
Jessie Garcia, Ph.D.

CEU Approval Process

Chair, Y. Evie Garcia, Ph.D.

**With great appreciation to our Lifetime Founding Members,
individuals who contributed to the re-invigoration of NLPA:**

Jesse Aros
Patricia Arredondo
Augustine Baron
Victor De La Cancela
Cynthia De Las Fuentes
Edward Delgado-Romero
Melanie Domenech Rodriguez

Elena Flores
Lisa Flores
Milton Fuentes
Yolanda Evie Garcia
Maria Garrido
Allen and Mary Bradford Ivey

Daniel Macias
Yolanda McAuliffe
Salvador Santiago-Negron
Maryann Santos de Barona
Edil Torres Rivera
Melba Vazquez

NLPA Student Volunteers

Veronica Bordes

Committee Co-Chair

Arlene Carrasco

Committee Co-Chair

Angela Zapata

Rhonda Casillas

Catalina D'Achiardi

Miguelina German

Rufus Gonzales

Liza Hita

Christina Howard

Arturo Kiyama

Enjolie Lafaurie

Ana Lucero

Jen Martin

Dominica McBride

Rosalilia Mendoza

Jessica Ortega

Magdalena Perez

Tuyen Pham

Karina Ramos

Alison Rhue

Tiffany Rice

Erasmus Rodriguez

Veronica Rodriguez

Yolanda Rodriguez

Marie-Christine Rutter

Jen Sand

Janaina Scannell

Lauren Soto

Kathryn Torres

Zoila Tovar-Gamero

Jessie Wetherbe

Ada Wilkinson-Lee

Gladys Valdez

Division and Dean's Office

Kyndra Holsapple

Pauline A. Hall

Donna Laguardia

Joan M. Sherwood

Conference Registration Oversight

Joe Pittle

The Wisdom Group, Providence, RI.

Scottsdale Plaza Resort Staff

Kelley, Marti and Christen

CEU Sponsors

Arizona Psychological Association (AzPA)
The program providing Continuing Education Units to Psychologists, School Psychologists, Counselors and Social Workers through this conference was co-sponsored by the Arizona Psychological Association. AzPA is approved by the American Psychological Association to offer continuing responsibility for the program.
National Association of Social Workers
National Board of Certified Counselors for professional counselors
Evaluation for CEU provided by Applied Behavioral Health Policy

Conference Sponsors

American Psychological Association & Divisions
Clinical Psychology
Psychologists in Independent Practice
Psychologists in Public Service
Society of Counseling Psychology
Society for the Psychology of Women
Society for the Psychological Study of Gay, Lesbian and Bisexual Concerns
Society for the Psychological Study of Ethnic Minority Issues
Applied Behavioral Health Policy, University of Arizona
APS
Argosy

Arizona State University

College of Education
Counseling and Consultation
Department of Chican/Chicano Studies
Division of Graduate Studies
Division of Student Life
Division of University Undergraduate Initiatives
Division of Student Affairs
Hispanic Research Center

Deborah Bloom
Paul and Sheila Bracy
Casey Family Services
Community Partnership of Southern Arizona
Empowerment Workshops, Inc.
Hospice of the Valley
Allen and Mary Bradford Ivey
Jewish Family and Children's Services
La Frontera
Latino Professional Network
Lisa Mercier-Allstate
Dr. Bernice Lott
Al Ouhuis
Dr. Ethel Tobach
Northern Arizona Regional Behavioral Health Authority
Microtraining Associates
Our Lady of the Lake University
Pinal Gila Behavioral Health Association
Prehab of Arizona
Sonoran Shoulder, Elbow, & Hand Rehab P.C.
Tempe Counseling Services
The Wisdom Group
TERROS
ValueOptions

Exhibitors

American Counseling Association
Argosy University
Arizona Council of Human Service Providers
Delta-T Group
El Palacio Bridal & Tux/Coleccion By Alma
Centro Ericksonian de Mexico AC
Handcrafted Native American Jewelry
National Science Foundation
Park Place Residential Treatment Center
Self-Esteem Bookstore
Silver Dreams
West Love Color and Culture

An Invitation to the next National Latino Psychological Association Conference

Scheduled for
Fall 2006
Milwaukee, Wisconsin

